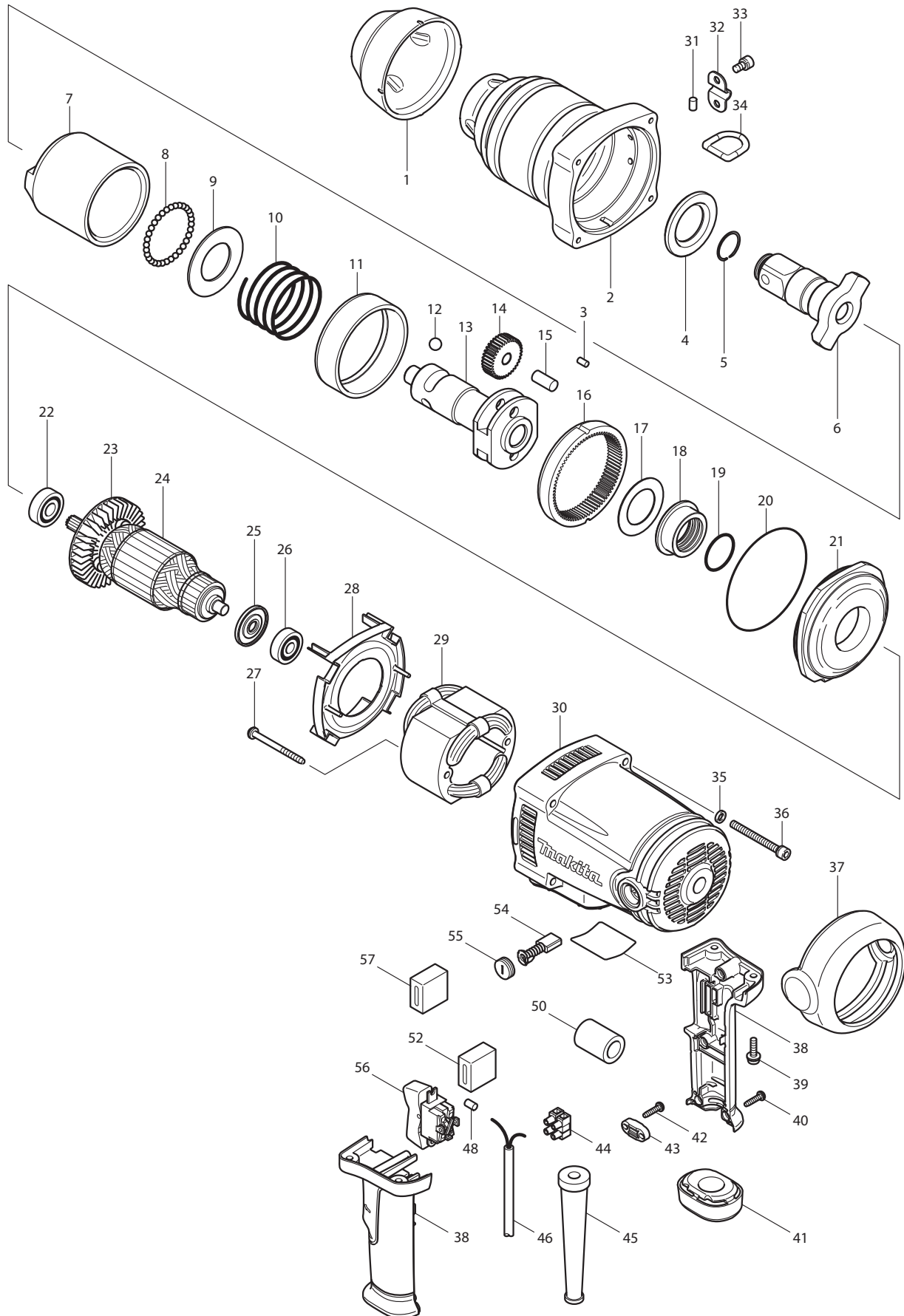




11 - 2010  
TW1000  
1" IMPACT WRENCH



## PARTS LIST

| Item No | Type | Part No  | Description                   | Qty | Unit |
|---------|------|----------|-------------------------------|-----|------|
| 001     |      | 421895-2 | FRONT BUMPER                  | 1   | PC.  |
| 002     |      | 154555-8 | HAMMER CASE COMPLETE          | 1   | PC.  |
| 003     |      | 256253-1 | PIN 5                         | 2   | PC.  |
| 004     |      | 253909-7 | FLAT WASHER 35                | 1   | PC.  |
| 005     |      | 231921-7 | RING SPRING 22                | 1   | PC.  |
| 006     |      | 325587-4 | ANVIL                         | 1   | PC.  |
| 007     |      | 325415-3 | HAMMER                        | 1   | PC.  |
| 008     |      | 216002-8 | STEEL BALL 4.8                | 32  | PC.  |
| 009     |      | 253712-6 | FLAT WASHER 36                | 1   | PC.  |
| 010     | 2    | 231211-8 | * COMPRESSION SPRING 36       | 1   | PC.  |
| 011     |      | 333112-7 | RING 79                       | 1   | PC.  |
| 012     |      | 216010-9 | STEEL BALL 10.3               | 2   | PC.  |
| 013     | 2    | 324666-5 | * SPINDLE                     | 1   | PC.  |
| 014     |      | 227149-3 | SPUR GEAR 37                  | 2   | PC.  |
| 015     |      | 256051-3 | PIN 10                        | 2   | PC.  |
| 016     |      | 221815-4 | INTERNAL GEAR 82              | 1   | PC.  |
| 017     |      | 267170-0 | FLAT WASHER 34                | 1   | PC.  |
| 018     |      | 310154-8 | BEARING BOX                   | 1   | PC.  |
| 019     |      | 213459-4 | O RING 32                     | 1   | PC.  |
| 020     |      | 213855-6 | O RING 95                     | 1   | PC.  |
| 021     |      | 317841-0 | HAMMER CASE COVER             | 1   | PC.  |
| 022     |      | 211137-0 | BALL BEARING 6201LLU          | 1   | PC.  |
| 023     |      | 240003-4 | ARMATURE FAN 80 - Removed     | 1   | PC.  |
| 024     |      | 516916-4 | ARMATURE ASS'Y 115V           | 1   | PC.  |
| 024     | INC. |          | Item No. 22, 23, 25, 26       | 1   | PC.  |
| 025     |      | 681665-3 | INSULATION WASHER             | 1   | PC.  |
| 026     |      | 211066-7 | BALL BEARING 6200LLB          | 1   | PC.  |
| 027     |      | 265345-5 | + HEX. BOLT M5X60             | 2   | PC.  |
| 028     |      | 418814-7 | BAFFLE PLATE                  | 1   | PC.  |
| 029     |      | 526146-9 | FIELD ASS'Y 115V              | 1   | PC.  |
| 029     | INC. | 654020-2 | RING TERMINAL                 | 2   | PC.  |
| 029     | INC. | 654502-4 | CONNECTOR P-2                 | 2   | PC.  |
| 030     |      | 154556-6 | MOTOR HOUSING COMPLETE        | 1   | PC.  |
| 030     | INC. | 643653-8 | BRUSH HOLDER 6.5-13.5         | 2   | PC.  |
| 031     |      | 263005-3 | RUBBER PIN 6                  | 1   | PC.  |
| 032     |      | 345517-9 | PLATE                         | 1   | PC.  |
| 033     | 2    | 922311-2 | * HEX. SOCKET HEAD BOLT M6X12 | 2   | PC.  |
| 034     |      | 282018-5 | D-RING                        | 1   | PC.  |

| Item No | Type | Part No       | Description                            | Qty | Unit |
|---------|------|---------------|--|-----|------|
| 035     |      | 941151-9      | FLAT WASHER 6                          | 4   | PC.  |
| 036     |      | 265538-4      | HEX.SOCKET HEAD BOLT M6X60             | 4   | PC.  |
| 037     |      | 421896-0      | REAR BUMPER                            | 1   | PC.  |
| 038     |      | 183935-1      | HANDLE SET                             | 1   | SET  |
| 039     |      | 911233-1      | PAN HEAD SCREW M5X20                   | 4   | PC.  |
| 040     |      | 265995-6      | TAPPING SCREW 4X18                     | 4   | PC.  |
| 041     |      | 421897-8      | BUMPER                                 | 1   | PC.  |
| 042     |      | 265995-6      | TAPPING SCREW 4X18                     | 2   | PC.  |
| 043     |      | 687063-9      | CORD CLAMP (STRAIN RELIEF)             | 1   | PC.  |
| 044     | 2    | 654741-6      | TERMINAL BLOCK                         | 1   | PC.  |
| 045     |      | 682564-2      | CORD GUARD                             | 1   | PC.  |
| 046     |      | 664265-4      | CORD WITH PLUG 2P-16-2.5M SJ           | 1   | PC.  |
| 048     |      | 263005-3      | RUBBER PIN 6                           | 1   | PC.  |
| 052     |      | 685725-3      | SPONGE SHEET                           | 1   | PC.  |
| 053     |      | 861265-7      | NAME PLATE F/TW1000                    | 1   | PC.  |
| 054     | 2    | 194986-9      | CARBON BRUSH CB-154 2PC/SET W/ ORIGIN  | 1   | SET  |
| 054     | 3    | 181047-4      | CARBON BRUSH CB-154 2PCS/SET W/ ORIGIN | 1   | SET  |
| 055     |      | 643650-4      | BRUSH HOLDER CAP 6.5-13.5              | 2   | PC.  |
| 056     |      | 651572-4      | SWITCH SL220SD-19                      | 1   | PC.  |
| 058     | 2    | 231212-6      | * COMPRESSION SPRING 49 (Added)        | 1   | PC.  |
| 059     | 2    | 253713-4      | * FLAT WASHER 35 (Added)               | 1   | PC.  |
| 100     |      | 652008-6      | P.H.SCREW M3.5X7 (FOR SWITCH)          | 4   | PC.  |
| 101     |      | 654037-5      | INSULATED EYE TERMINAL FT1.25-M3       | 4   | PC.  |
| A01     |      | 122727-3      | SIDE GRIP ASS'Y                        | 1   | PC.  |
| A01     | INC. | 345097-5      | BELT                                   | 1   | PC.  |
| A01     | INC. | 312743-5      | GRIP BASE                              | 1   | PC.  |
| A01     | INC. | 266358-9      | R.H SQUARE NECK BOLT M8X50             | 1   | PC.  |
| A01     | INC. | 152624-9      | GRIP 36 COMPLETE                       | 1   | PC.  |
| A02     |      | 824737-3      | PLASTIC CARRYING CASE                  | 1   | PC.  |
| A02     | 2    | INC. 163467-4 | LATCH (METAL) - TYPE2                  | 2   | PC.  |
| A03     |      | 134870-6      | EXTENSION BAR 25.4                     | 1   | PC.  |

## SERVICE CHANGES: TW1000

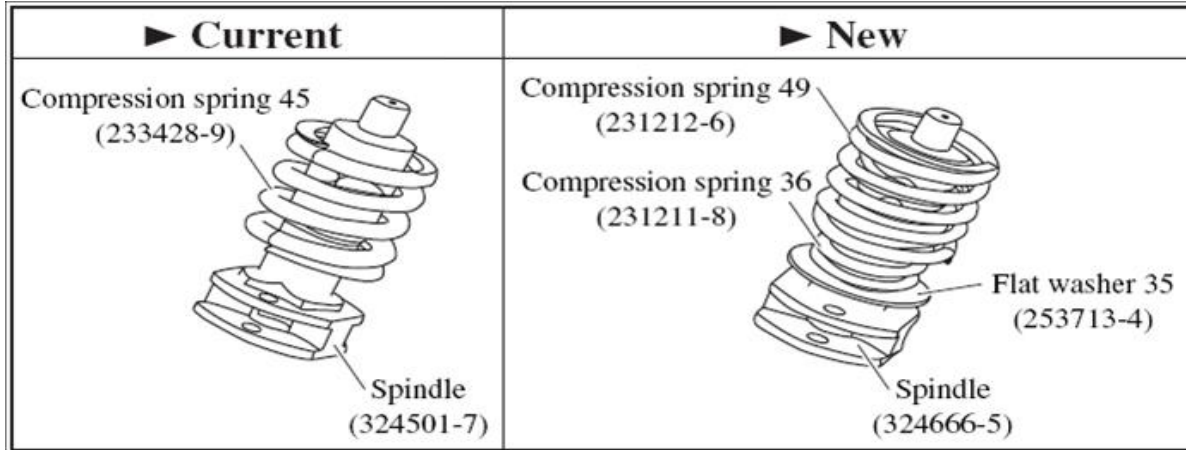
### 1. Change of Spindle and Compression Spring 45.

Addition of Compression spring 49 and Flat washer 35

| Item No. | Description                | Type1              | Type2              |
|----------|----------------------------|--------------------|--------------------|
| 13       | SPINDLE                    | 324501-7           | 324666-5           |
| 10       | COMPRESSION SPRING         | 233428-9 (Size 45) | 231211-8 (Size 36) |
| 58       | COMPRESSION SPRING (Added) | -----              | 231212-6 (Size 49) |
| 59       | FLAT WASHER 35 (Added)     | -----              | 253713-4           |

Above parts interchangeable as a set.

(T/I # 86373)



### 2. Change of M6x12 HSH Bolt

| Item No. | Description                 | Type1    | Type2    |
|----------|-----------------------------|----------|----------|
| 33       | HEX. SOCKET HEAD BOLT M6X12 | 266157-9 | 922311-2 |

**Note:**

**Apply 0.1g Loctite 272 to the thread to prevent Grease leakage and keep the interchangeability.**

