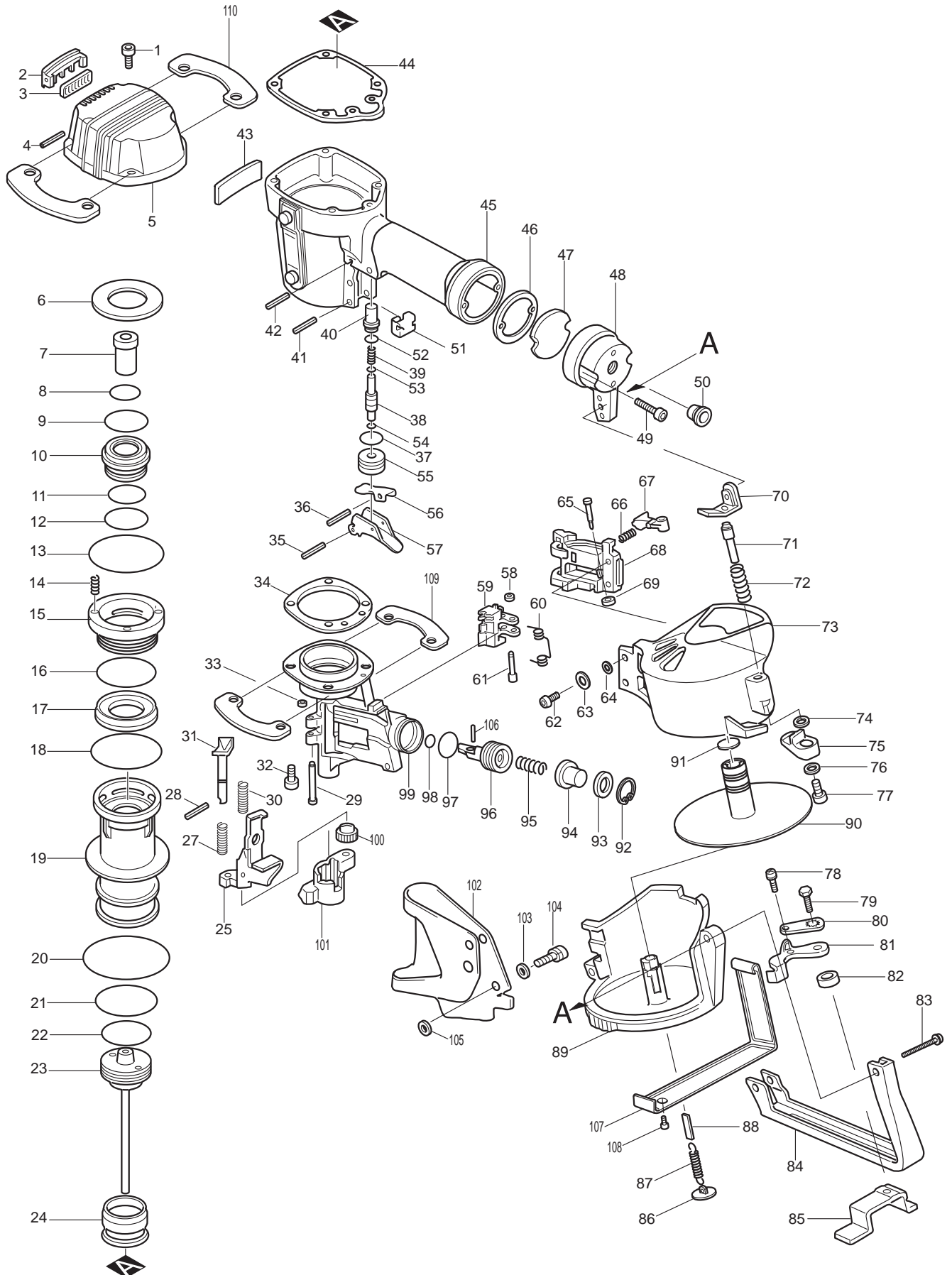




12 - 2011

AN451

# 1-3/4" COIL ROOFING NAILER



Item No.	Type	Sub	Part No.	Description	Qty	Unit
1			922241-7	* H.S.H BOLT M5X25	4	PC.
2			414957-3	COVER	1	PC.
3			415235-4	MUFFLER	1	PC.
4			258018-7	SPRING PIN 2.5-9	2	PC.
5			151605-0	* TOP CAP COMPLETE	1	PC.
		INC.	819734-2	* INDICATION LABEL	1	PC.
6			261093-4	URETHANE WASHER 32	1	PC.
7			421399-4	CUSHION R	1	PC.
8			213416-2	O RING 26	1	PC.
9			213462-5	O RING 33	1	PC.
10			414935-3	MAIN VALVE	1	PC.
11			213424-3	O RING 27	1	PC.
12			213423-5	O RING 30	1	PC.
13			213665-1	O RING 56	1	PC.
14			233038-2	COMPRESSION SPRING 5	4	PC.
15			316380-7	SUB VALVE	1	PC.
16			213558-2	O RING 42	1	PC.
17			421400-5	VALVE SHEET	1	PC.
18			213656-2	O RING 53 (OLD# 213604-1)	1	PC.
19			316409-9	CYLINDER	1	PC.
20			213706-3	O RING 67	1	PC.
21			213613-0	O RING 45 (OLD# 213566-3)	1	PC.
22			213475-6	O RING 34	1	PC.
23			150383-9	DRIVER COMPLETE	1	PC.
24			421491-6	CUSHION F	1	PC.
25			165207-6	CONTACT ARM (OLD# 165032-5)	1	PC.
27			233097-6	COMPRESSION SPRING 7	1	PC.
28			258021-8	SPRING PIN 2-9	1	PC.
29			256678-9	PIN 4	1	PC.
30			233096-8	COMPRESSION SPRING 5	1	PC.
31			162170-4	LEVER PIN 6	1	PC.
32			265929-9	* H.S.H BOLT M6X22	4	PC.
33			262054-7	URETHANE RING 3	1	PC.
34			442118-5	DRIVER GUIDE GASKET	1	PC.
35			951072-7	SPRING PIN 3-24	1	PC.
36			258004-8	SPRING PIN 2.5-16	1	PC.
37			213218-6	O RING 16	1	PC.
38			322530-4	TRIGGER VALVE STEM	1	PC.
39	1		233035-8	COMPRESSION SPRING 3 (9/16")	1	PC.
	2		233425-5	COMPRESSION SPRING 3 (11/16")	1	PC.
40			322531-2	PILOT VALVE	1	PC.
41			951072-7	SPRING PIN 3-24	1	PC.
42			258020-0	SPRING PIN 2.5-22	2	PC.
43			857129-1	NAME PLATE AN451	1	PC.
44			442109-6	TOP CAP GASKET	1	PC.
45			151604-2	* HOUSING COMPLETE	1	PC.
		INC.	819733-4	* INDICATION LABEL	1	PC.
		INC.	819732-6	* INDICATION LABEL	1	PC.
46			442110-1	INLET CAP GASKET	1	PC.
47			413054-2	INLET FILTER	1	PC.
48			150989-3	INLET CAP COMPLETE	1	PC.
		INC.	810738-7	CAUTION LABEL	1	PC.
49			922242-5	H.S.H BOLT M5X25	2	PC.
50			286219-7	CAP 12	1	PC.
51			343879-9	HOLDER	1	PC.
52			213030-4	O RING 8	1	PC.

Item No.	Type	Sub	Part No.	Description	Qty	Unit
53	1		213028-1	O RING 2	1	PC.
	2		213957-8	O RING 2	1	PC.
54	1		213028-1	O RING 2	1	PC.
	2		213957-8	O RING 2	1	PC.
55			322380-7	TRIGGER VALVE CASE	1	PC.
56			344258-4	* IDLER	1	PC.
57			165133-9	* TRIGGER	1	PC.
58			262054-7	URETHANE RING 3	1	PC.
59			310098-2	FEEDING CLAW (OLD# 311916-7)	1	PC.
60			231603-1	TORSION SPRING 6	1	PC.
61			256432-1	PIN 4-4.5	1	PC.
62	2		265903-7	* H.S.H. BOLT M5X12	1	PC.
63			253999-0	WASHER 5	1	PC.
64	2		267010-2	* FLAT WASHER 5	1	PC.
65			256679-7	PIN 4	1	PC.
66			233095-0	COMPRESSION SPRING 4	1	PC.
67			311913-3	CHECK CLAW	1	PC.
68			311914-1	DOOR	1	PC.
69			262054-7	URETHANE RING 3	1	PC.
70			344256-8	MAGAZINE LOCK (OLD# 311894-1)	1	PC.
71			322532-0	LOCK PIN	1	PC.
72			231307-5	COMPRESSION SPRING 6	1	PC.
73			150496-6	MAGAZINE CAP COMPLETE	1	PC.
		INC.	810783-2	CAUTION LABEL (ENG)	1	PC.
74			267010-2	FLAT WASHER 5	1	PC.
75			414933-7	LOCK LEVER	1	PC.
76			267010-2	FLAT WASHER 5	1	PC.
77			266233-9	H.S.H BOLT M5X12 (OLD# 265903-7)	1	PC.
78			911105-0	PAN HEAD SCREW M4X6	1	PC.
79			921322-4	HEX. BOLT M6X16	1	PC.
80			341718-7	LOCK PLATE	1	PC.
81			343977-9	LEVER PLATE	1	PC.
82			257166-9	RING 9	1	PC.
83			265919-2	HEX. SOCKET HEAD BOLT M5X30	1	PC.
84			343978-7	SINGLE GUIDE	1	PC.
85			165250-5	ADJUSTER PLATE (OLD 165033-3)	1	PC.
86			414934-5	HOLDER CAP	1	PC.
87			231793-0	TENSION SPRING 5	1	PC.
88			423232-6	RUBBER PLATE 6-20	1	PC.
89			415779-4	* MAGAZINE	1	PC.
		INC.	931102-0	* HEX. NUT M4	1	PC.
90			415169-1	CHANGE PLATE	1	PC.
91			414934-5	HOLDER CAP	1	PC.
92			962112-6	RETAINING RING R-22	1	PC.
93			262055-5	RUBBER RING 16	1	PC.
94			344597-2	CUP WASHER 5 (OLD# 343880-4)	1	PC.
95			233057-8	COMPRESSION SPRING 11	1	PC.
96			322579-4	PISTON	1	PC.
97			213261-5	O RING 17	1	PC.
98			213007-9	O RING 8	1	PC.
99			150386-3	DRIVER GUIDE COMPLETE	1	PC.
100			311891-7	ADJUSTER	1	PC.
101			165073-1	CONTACT TOP	1	PC.
102			413060-7	SAFETY COVER	1	PC.
103			253999-0	WASHER 5	1	PC.
104			265919-2	HEX. SOCKET HEAD BOLT M5X30	1	PC.
105			253999-0	WASHER 5	1	PC.

Item No.	Type	Sub	Part No.	Description	Qty	Unit
106			951054-9	SPRING PIN 3-10	1	PC.
107			344254-2	* MAGAZINE GUARD	1	PC.
108			911110-7	* PAN HEAD SCREW M4X8	1	PC.
109			344747-9	* HOUSING GUARD F	2	PC.
110			344748-7	* HOUSING GUARD R	2	PC.
111			266233-9	* HEX. SOCKET HEAD BOLT M5X12	1	PC.
C01			840148-4	CARTON	1	PC.
<b><u>ACCESSORIES</u></b>		<b>- See catalogue or visit <a href="http://www.makita.ca">www.makita.ca</a> for more accessories -</b>				
A01			181434-7	OIL SUPPLY 30CC	1	PC.
A02			195246-2	SAFETY GOGGLE	1	PC.
A03			192393-0	TOOL FIRST AID REPAIR KIT	1	SET

## **SERVICE CHANGES**

### **1. Changes on Housing Com., Top Cap Com., etc.**

<b>Item No.</b>	<b>Description</b>	<b>Type 1</b>	<b>Type 2</b>
1	H.S.H Bolt	922232-8 (M5X20)	922241-7 (M5X25)
5	Top Cap Com.	151381-6	151605-0
-	Top Cap Bumper	421455-0	----
32	H.S.H Bolt	265962-1 (M6X20)	265929-9 (M6X22)
45	Housing Com.	159536-7	151604-2
-	HSG Bumper L	162167-3	-----
-	HSG Bumper R	162166-5	-----
109	HSG Guard F	-----	344747-9
110	HSG Guard R	-----	344748-7
	Serial #	~ 25300E	25301E ~

Above parts are completely interchangeable as a set.

### **2. Changes on Idler and Trigger**

<b>Item No.</b>	<b>Description</b>	<b>Type 1</b>	<b>Type 2</b>
56	Idler	343949-4	344258-4
57	Trigger	343950-9	165133-9

Above parts are completely interchangeable as a set.

### **3. Changes on H.S.H Bolt and Flat Washer for Magazine Cap**

<b>Item No.</b>	<b>Description</b>	<b>Type 1</b>	<b>Type 2</b>
62	H.S.H Bolt M5X12	265903-7 (2PC)	265903-7 (1PC)
111	H.S.H Bolt M5X12	-----	266233-9 (1PC, W/Washer)
64	Flat Washer 5	267010-2 (2PC)	267010-2 (1PC)

Above parts are completely interchangeable as a set.

### **4. Changes on Magazine Guard**

<b>Item No.</b>	<b>Description</b>	<b>Type 1</b>	<b>Type 2</b>
89	Magazine	415170-6	415779-4
107	Magazine Guard	-----	344254-2
108	P.H.Screw	-----	911110-7
	Serial No.	~ 6748E	6749E ~

Above parts are completely interchangeable as a set.