



Cordless Drywall Cutter SD100D



Suitable for Straight
Overhead Cutting
such as setting lights,
air vents etc.

12V
LITHIUM-ION
CXT

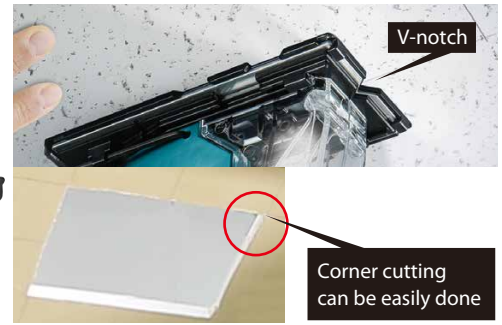
Base cover

protects drywall surfaces from damage/scratches.



Variable speed control by trigger allows easier start of cutting.

V-notch in base plate helps easy tracing of cutting line.



Dust collector

catches dust that drops through the base of base cover.

Dust connector assembly

connectable to vacuum cleaner.

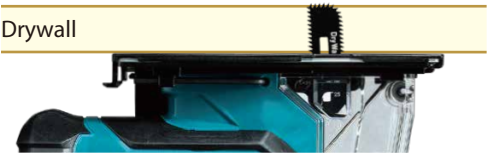
LED job light

brightly illuminates the cut line for easy cutting of workpiece in the dark place.



Cutting depth adjustment

Drywall



- Cutting depth can be adjusted to drywall thickness.
- Prevent accidental breakage of wires

Blades



For dry wall
Part No. B-49703

For wood
Part No. B-49719

Option
(Snap-off blade)

Blade cover

protects drywall surfaces from damage/ scratches.



Cordless Drywall Cutter SD100D

- Variable Speed
- Orbital Cutting
- Dust Collecting
- Built-in Job Light
- Carrying Case

Battery Capacities	12V MAX CXT Li-ion
Maximum Cutting Capacities:	Drywall: 1-3/16" (30 mm) Wood: 9/16" (15 mm)
Strokes Per Minute	0 - 6,000 SPM
Length of Stroke	1/4" (6 mm)
Overall Length	9-3/4" (248 mm)

Standard Equipment: Tool Only. Batteries and Charger Sold Separately. Base Cover (456624-4), Blade Cover (456632-5), Blade (B-49703), Dust Collector (123559-1), Hex Wrench 3 (783201-2)

When QUALITY & SERVICE COUNTS – Choose Makita

makita.ca