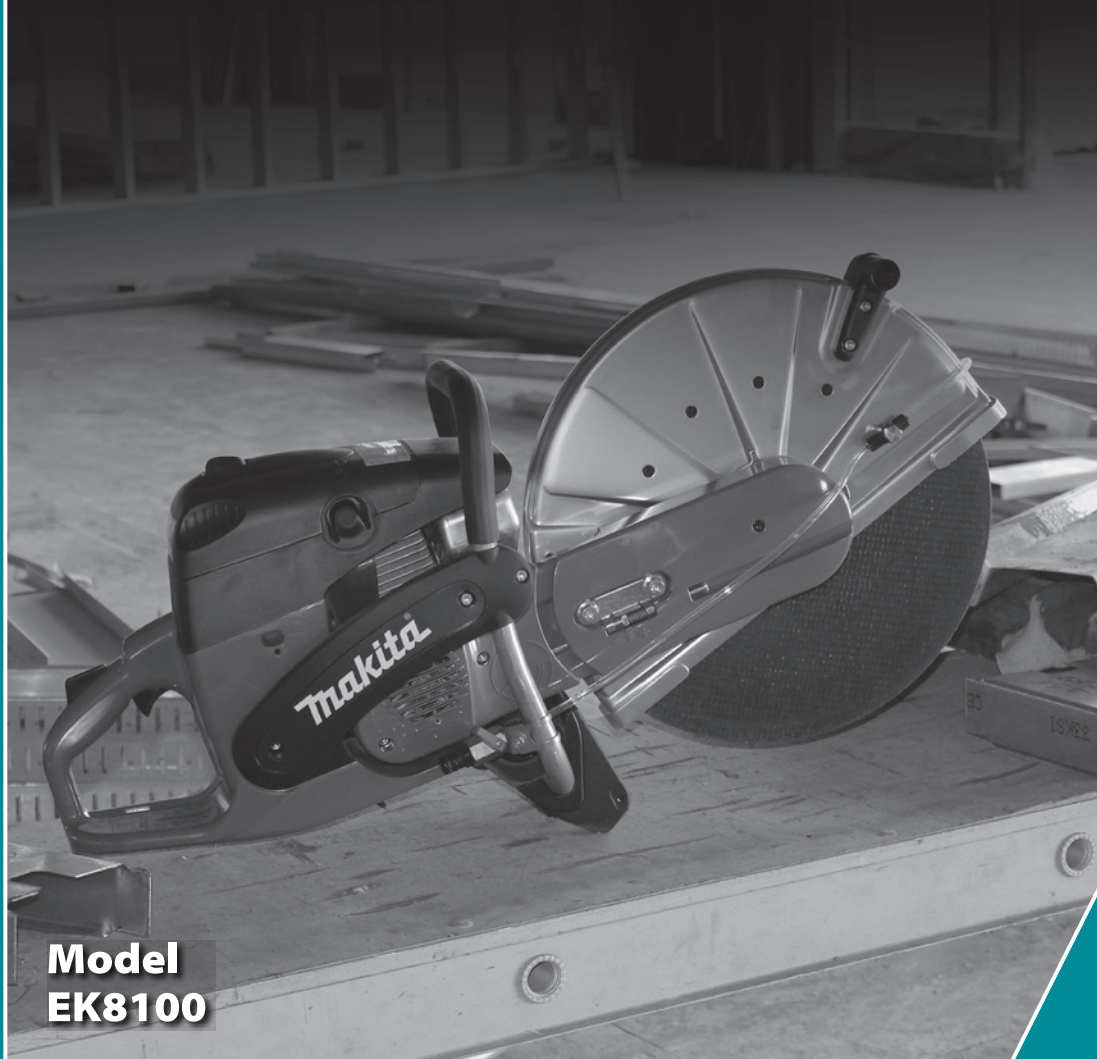


# Makita®

## 16" 81 cc. INDUSTRIAL POWER CUTTER

**POWERFUL 81 cc. ENGINE PRODUCES 5.6 HP TO COMPLETE THE MOST CHALLENGING APPLICATIONS**

- SLR Muffler Recycles Unburned Fuel Vapor For Reduced Scavenging-Losses and Up to 15% Improved Fuel Consumption
- Ignition Coil With Start Support Function Stores Electrical Energy With Each Pull for More Efficient Ignition at Start Up
- Improved Decompression Valve and Metering Spring for Precise Fuel Regulation
- On-Off-Choke Operation Switch on a Single Lever for Operator Convenience



**Model  
EK8100**

### POWER



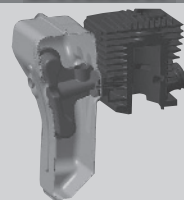
Ignition coil with start-support function stores electrical energy each pull for easier start ups

### PERFORMANCE



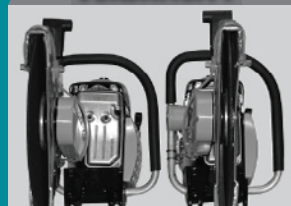
Five-stage filter system w/ advanced directional air flow ensures clean air for added performance & long engine life

### EFFICIENCY



SLR muffler recycles unburned fuel vapor, reducing scavenging-losses up to 15% improved consumption

### VERSATILITY



Change blade from central to outbound flush position for lateral cuts in less than 2 minutes

# INCREASED PERFORMANCE

# 16" 81 cc. INDUSTRIAL POWER CUTTER

## Model EK8100

### FEATURES & BENEFITS

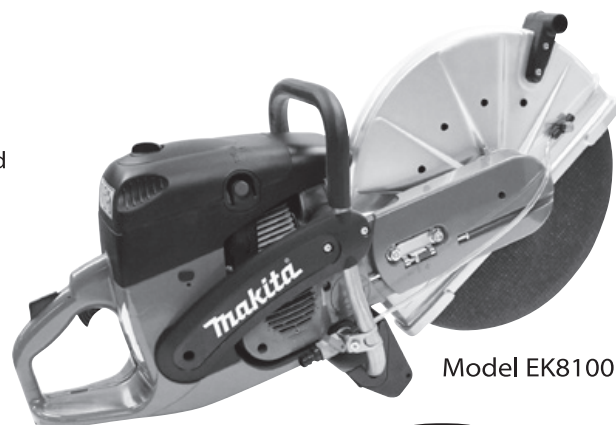
- Powerful 81 cc. engine produces 5.6 HP to complete the most challenging applications
- SLR Muffler recycles unburned fuel vapor for reduced scavenging-losses and up to 15% improved fuel consumption
- Ignition coil with start support function stores electrical energy with each pull for more efficient ignition at start up
- Improved decompression valve and metering spring for precise fuel regulation
- On-Off-Choke operation switch on a single lever for operator convenience
- Microchip controlled carburetor engineered to compensate engine timing according to work load
- Five-stage, foam-paper-nylon system with advance directional air flow provides cleaner air for better saw performance
- Cutting arm position changes simply from center position to flush (outboard) position allowing cuts directly adjacent to curb edges, wall or directly above the ground
- Four vibration-absorbing rubber engine mounts and two mass-dampening systems for reduced vibration
- Aluminum guard and wheel pressure plates to reduce weight
- Water kit is assembled to saw for use with garden hose, dolly and gravity feed tank (DT2010)

### STANDARD EQUIPMENT

- 16" Cutting Disk F/Stone (20 mm) (966 161 020), Tool Kit (957 004 006), Water Attachment Kit (394 365 630), Starter Rope (394 164 020), Spark Plug (965 603 021)

### SPECIFICATIONS

Displacement	4.9 cu.in (81 cc)
Max. Power	4.2 kW (5.6 H.P)
Fuel / Oil Mixture	50:1
Fuel Tank Capacity	1.1 L
No Load Speed (Engine)	9,350 RPM
Max. Spindle Speed	3,820 RPM
Arbor	20 mm
Max. Cutting Depth	5-3/4" (147 mm)
Dry Weight	23.4 lbs (10.6 kg)



Model EK8100

**2**  
YEAR

**WARRANTY**

### WARRANTY

- All Makita gas powered outdoor power equipment (OPE) is warranted to be free of defects from workmanship and materials for a period of TWO YEARS from the date of original purchase. This warranty includes Makita gas powered OPE products used in consumer, commercial or rental applications. Any accessories included with OPE products have a ONE YEAR warranty. These accessories include but are not limited to chainsaw chains, chainsaw bars, trimmer heads, brush cutter blades, handles, harnesses, hoses, connectors, filters, bags, tool kits, and adjustment/maintenance tools.

**OUTDOOR**  
POWER EQUIPMENT

**Makita**

When SERVICE Counts - Choose Makita