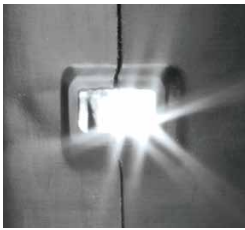




Variable speed control dial

allows operator to adjust cutting speed depending on material or application.

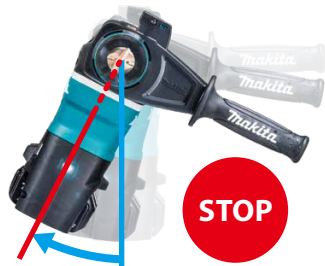


Dual LED job lights

Active Feedback sensing Technology

AFT

Torque limiter turns the motor off if the tool is suddenly forced to lock

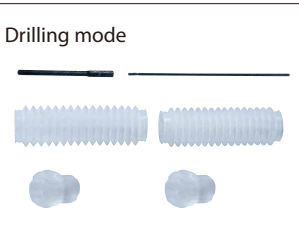


XPT
EXTREME PROTECTION TECHNOLOGY

Dust and drip-proof performance is enhanced for use in outdoor applications or harsh environments.

Accessories

Dust Extractor Attachment Set



Part No. 199014-5



Dust Extractor Attachment Set
Hammering only

without Vacuum hose set

Part No. 199017-9

with Vacuum hose set

Part No. 199019-5



1-9/16" Rotary Hammer

DHR400

- Variable Speed
- Brake
- Reversing
- SDS-MAX Shank
- Torque Limiter
- Constant Speed
- Soft Start
- Dust Collection
- Built-in Job Light
- Carrying Case

Battery Capacities	Two 18V Li-Ion
Capacities:	Concrete (TCT): 1-9/16" (40 mm)
	Concrete (Core Bit): 4-1/8" (105 mm)
	Impact Energy: 11.4 J (8.4 ft. lbs)
No Load Speed	250 - 500 RPM
Blows Per Minute	1,450 - 2,900 BPM
Overall Length	18-5/8" (473 mm)

DHR400ZK Standard Equipment: Tool Only. Batteries and Charger Sold Separately. Straight Side Handle (123138-5), D-Style Side Handle (196792-8), Cleaning Cloth (443122-7), Bit Grease (194683-7), Depth Gauge (331955-1), Plastic Carrying Case (821746-3)

DHR400PT2 Standard Equipment: Two 18V (5.0 Ah) Li-Ion Batteries BL1850B (196675-2), Dual Port Rapid Charger (DC18RD), Straight Side Handle (123138-5), D-Style Side Handle (196792-8), Cleaning Cloth (443122-7), Bit Grease (194683-7), Depth Gauge (331955-1), Plastic Carrying Case (821746-3)

DHR400T2N Standard Equipment: Two 18V (5.0 Ah) Li-Ion Battery BL1850B (196675-2), Dual Port Rapid Charger (DC18RD), Straight Side Handle (123138-5), D-Style Side Handle (196792-8), Cleaning Cloth (443122-7), Bit Grease (194683-7), Depth Gauge (331955-1), Plastic Carrying Case (821746-3)

When QUALITY & SERVICE COUNTS – Choose Makita

makita.ca



1-9/16" Rotary Hammer
DHR400

Satisfy Professional's Needs



Adapted for
SDS-MAX bits

High Power
similar to
AC Tool

with Active Feedback
sensing Technology

Extra Comfort with low level of vibration

BRUSHLESS
X2
18V 18V 36V



AVT

SOFT
NOLOAD

BL
MOTOR

AFT

AWS

XPT



Adapted for
SDS-MAX bits

Excellent performance equivalent to AC Model

BRUSHLESS
X2
18V + 18V → 36V

Newly developed BL motor
delivers high power



Drilling work amount

Work volume on a single full battery charge

About **25** holes

- ◆ w/ T.C.T. bit 11/16"
- ◆ Depth : 5-1/2"
- ◆ Concrete Compressive Strength: 5,800 PSI
- ◆ Battery : BL1850Bx2

Demolition work

with bull point

Impact Energy

[EPTA-Procedure 05/2009]

8.0J

Makita HR4013C 8.0J

AVT & SOFT
NO LOAD

ANTI VIBRATION TECHNOLOGY

Vibration absorbing
housing isolates handle
and motor.

Active dynamic vibration
absorber moves in the
opposite direction to the
drive piston to reduce
vibration.

Damper spring absorbs
impact vibrations from
the drill bit.



AWS

Auto-start Wireless System



Wireless unit

Part No.
198901-5

Bluetooth®

Switch on the tool
Vacuum cleaner is activated

■ Comparison of Vibration level* and Time to reach ELV
(Exposure Limit of Vibration)**

* It is known as the tri-axial value and value at
Directive of A(8).

**It means the maximum amount of vibration that an
operator may be exposed to on any single day.

Time to reach ELV (min)	100	200	550
Makita DHR400	5.0m/s ²		540min
Makita HR4013C	5.0m/s ²		540min
Vibration level (m/s ²)	0	5	10 15



DVC864

**AWS connects to power tool
via Bluetooth.**

Wireless unit



Bluetooth®

The Bluetooth® word mark and logos are registered trademarks owned
by the Bluetooth SIG, Inc. and any use of such marks by Makita is under
license. Other trademarks and trade names are those of their respective
owners.

Expand AWS Line-up

AWS

