



## Angle Grinders

9564P 4-1/2" (115 mm) / 9564PCV 4-1/2" (115 mm)

9565PCV 5" (125 mm)



**ON**

**Easy-to-operate**

# PADDLE TYPE SWITCH



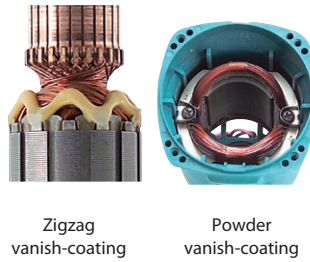
**OFF**

The power can be turned off as soon as you release the hand!

# Durable motor with high heat resistance

## High power & Heavy-Duty motor

Field with superior wiring technology leads to higher wattage without motor-size expansion. The successors inherit slim body, zigzag varnish-coating on armature and powder varnish-coating on field from the predecessors.



Zigzag varnish-coating

Powder varnish-coating

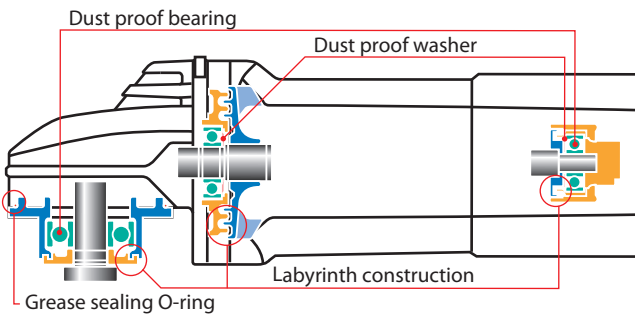


Photo: 9564P

### Toolless Wheel Cover

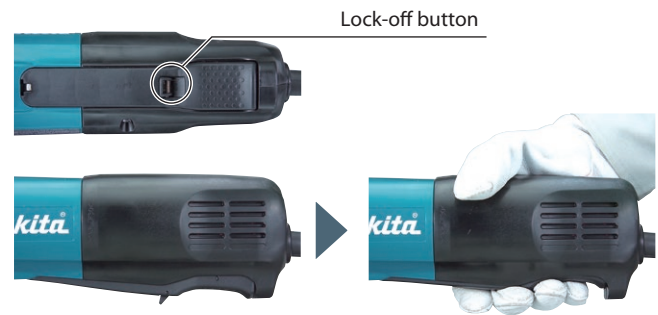
### More Durable Gears and Bearings


- Gears are lubricated by securely sealed grease in gear room.
- Bearings are protected from dust/dirt by Labyrinth construction.



### Easy-to-operate paddle type on/off switch

- Can be easily controlled by the hand gripping the machine.
- With non-slip pattern on the surface of paddle lever for easy on-off control
- The lock-off button is positioned in the center of the paddle lever so that it is operable no matter what portion of the lever is gripped.



Angle Grinders	9564P / 9564PCV / 9565PCV		325	
	9564P / 9564PCV			9565PCV
 Double Insulation	<b>Maximum Capacities</b>		<b>Maximum Capacities</b>	
	<b>Grinding Wheel</b>	4-1/2" (115 mm)	<b>Grinding Wheel</b>	5" (125 mm)
	<b>Sanding Disc</b>	4-1/2" (115 mm)	<b>Sanding Disc</b>	5" (125 mm)
	<b>Wire Cup Brush</b>	3-1/2" (90 mm)	<b>Diamond Wheel</b>	5" (125 mm)
	<b>Spindle Thread</b>	5/8" - 11 UNC	<b>Wire Brush</b>	3-1/2" (90 mm)
	<b>No Load Speed</b>	9564P: 11,900 RPM 9564PCV: 2,800 - 10,500 RPM	<b>Spindle Thread</b>	5/8" - 11 UNC
	<b>AMPS (120V)</b>	9564P: 10.0 A 9564PCV: 13.0 A	<b>No Load Speed</b>	2,800 - 10,500 RPM
	<b>Overall Length</b>	12-1/8" (307 mm)	<b>AMPS (120V)</b>	13.0 A
			<b>Overall Length</b>	12-1/8" (307 mm)

When QUALITY & SERVICE COUNTS – Choose Makita

makita.ca