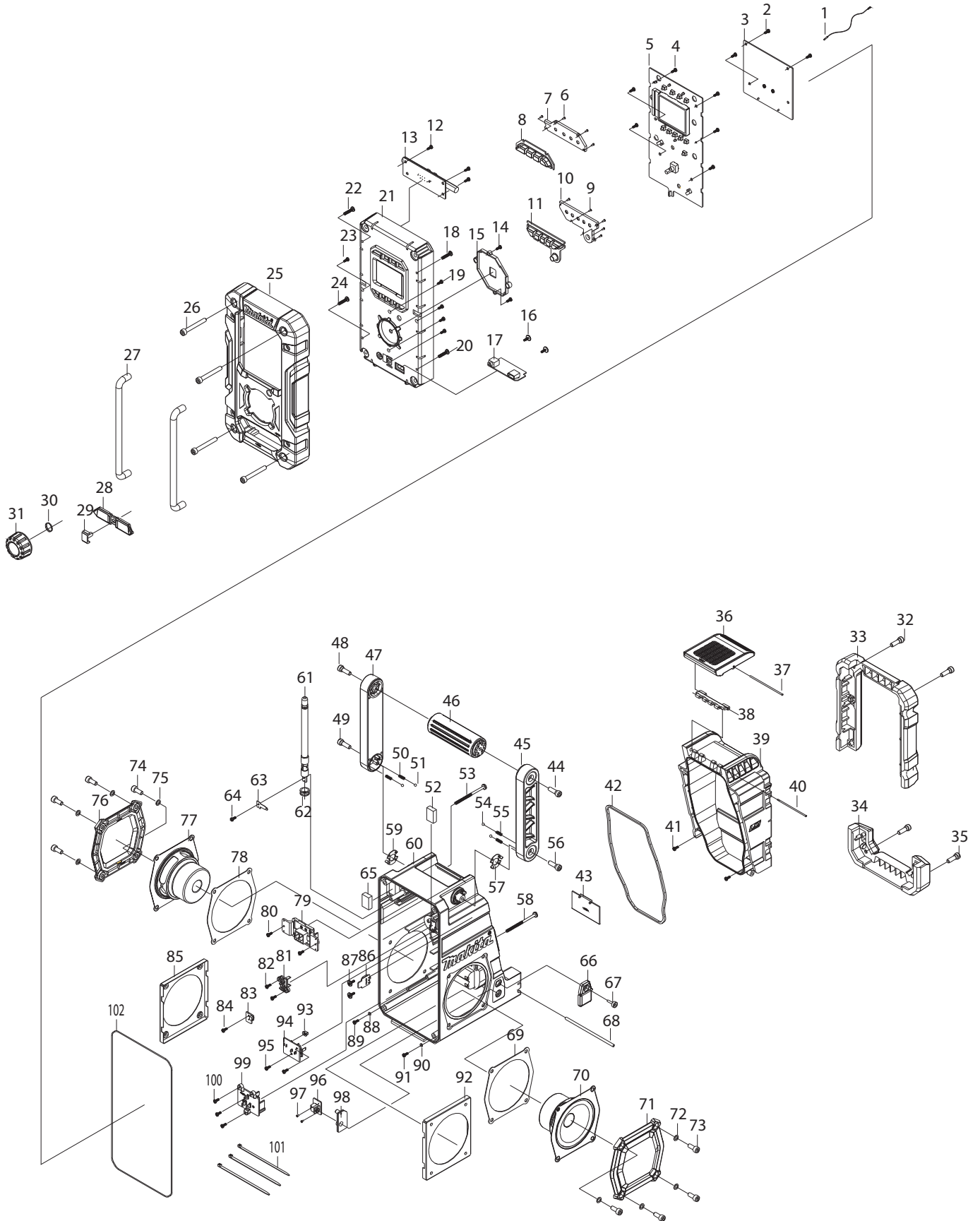




12 - 2014

DMR106

AM/FM JOB SITE RADIO W/ BLUETOOTH



Item No.	Type Sub	Part No.	Description	Qty	Unit
1		SE00000437	LEAD WIRE F/ANTENNA	1	PC.
2		SE00000325	SCREW PTB 3X8(NI)	3	PC.
3		SE00000442	PCB A ASS'Y EUROPE	1	PC.
4		SE00000325	SCREW PTB 3X8(NI)	6	PC.
5		SE00000330	PCB C ASS'Y USA	1	PC.
6		SE09090011	SCREW 1.7	4	PC.
7		SE00000333	POWER BUTTON HOLDER	1	PC.
8		SE00000334	POWER BUTTON	1	PC.
9		SE09090011	SCREW 1.7	5	PC.
10		SE00000336	PRESET BUTTON HOLDER	1	PC.
11		SE00000337	PRESET BUTTON	1	PC.
12		SE00000325	SCREW PTB 3X8(NI)	3	PC.
13		SE00000339	PCB P ANT BAR ASS'Y	1	PC.
14		SE00000325	SCREW PTB 3X8(NI)	2	PC.
15		SE00000239	KNOB LENS HOLDER	1	PC.
16		SE00000193	SCREW 3X10	2	PC.
17		SE00000343	PCB P USB ASS'Y	1	PC.
18		SE09064161	SCREW M4X16	1	PC.
19		SE00000325	SCREW PTB 3X8(NI)	4	PC.
20		SE09064161	SCREW M4X16	1	PC.
21		SE00000347	FRONT CABINET ASS'Y	1	PC.
22		SE09064161	SCREW M4X16	1	PC.
23		SE00000325	SCREW PTB 3X8(NI)	1	PC.
24		SE09064161	SCREW M4X16	1	PC.
25		SE00000351	FRONT BUMPER	1	PC.
26		SE00000160	SCREW PTHE6X47(CR)	4	PC.
27		SE0338PC5Z	FRONT BAR	2	PC.
28		SE00000355	JACK RUBBER COVER	1	PC.
29		SE00000356	JACK COVER	1	PC.
30		SE21B1110A	ROTARY KNOB RING	1	PC.
31		SE00000243	ROTARY KNOB	1	PC.
32		SE09176166	HEX SCREW M6X16	2	PC.
33		SE00000357	BATTERY BUMPER	1	PC.
34		SE00000359	REAR BUMPER	1	PC.
35		SE09176166	HEX SCREW M6X16	2	PC.
36		SE00000362	LOCKER COVER	1	PC.
37		SE00000364	LOCKER FIXER PIN 73.5MM	1	PC.
38		SE00000365	LOCK HINGER	1	PC.
39		SE00000367	BATTERY COVER	1	PC.
40		SE00000369	LOCKER FIXER PIN 64.5MM	1	PC.
41		SE00000325	SCREW PTB 3X8(NI)	2	PC.
42		SE00000371	BATTERY COVER PACKING	1	PC.
43		SE0307PC5Z	BACK UP BATTERY COVER	1	PC.
44		SE00000176	SCREW PTHE6X20(CR)	1	PC.
45		SE00000177	HANDLE HOLDER(R)	1	PC.
46		SE00000179	HANDLE	1	PC.
47		SE00000180	HANDLE HOLDER (L)	1	PC.
48		SE00000176	SCREW PTHE6X20(CR)	1	PC.
49		SE09176166	HEX SCREW M6X16	1	PC.
50		SE00000184	SPRING	2	PC.
51		SE09994007	STEEL BALL	2	PC.
52		SE023PC020	EVA 25X18X5.5	1	PC.
53		SE00000445	SCREW PTB 3X45(NI)	1	PC.
54		SE09994007	STEEL BALL	2	PC.
55		SE00000184	SPRING	2	PC.
56		SE09176166	HEX SCREW M6X16	1	PC.
57		SE00000187	HANDLE SUS-PLATE (R)	1	PC.

Item No.	Type	Sub	Part No.	Description	Qty	Unit
58			SE00000445	SCREW PTB 3X45(NI)	1	PC.
59			SE00000192	HANDLE SUS-PLATE(L)	1	PC.
60			SE00000392	REAR CABINET	1	PC.
61			SE00000395	RUBBER ANT 88-108(BLK)	1	PC.
62			SE00000398	ROD ANT PACKING	1	PC.
63			SE00000396	ROD ANT TERMINAL	1	PC.
64			SE00000325	SCREW PTB 3X8(NI)	1	PC.
65			SE023PC020	EVA 25X18X5.5	1	PC.
66			SE00000403	DC RUBBER COVER	1	PC.
67			SE00000404	SCREW PTHE 3X14(CR)	1	PC.
68			SE021PC030	BATTERY COVER LOCKER	1	PC.
69			SE00000406	SPEAKER PACKING	1	PC.
70			SE00000407	SPEAKER(R)	1	PC.
71			SE00000408	SPEAKER PANEL ASS'Y	1	PC.
72			SE024J9040	PACKING	4	PC.
73			SE9076146A	HEX SCREW M6X14	4	PC.
74			SE9076146A	HEX SCREW M6X14	4	PC.
75			SE024J9040	PACKING	4	PC.
76			SE00000408	SPEAKER PANEL ASS'Y	1	PC.
77			SE00000438	SPEAKER (L)	1	PC.
78			SE00000406	SPEAKER PACKING	1	PC.
79			SE00000416	TERMINAL E (B)	1	PC.
80			SE00000325	SCREW PTB 3X8(NI)	2	PC.
81			SE00000200	TERMINAL C	1	PC.
82			SE00000325	SCREW PTB 3X8(NI)	2	PC.
83			SE00000420	PCB B BATTERY SWITCH ASS'Y	1	PC.
84			SE00000325	SCREW PTB 3X8(NI)	1	PC.
85			SE00000422	SPEAKER HOLDER	1	PC.
86			SE00000423	PCB B AUX IN 2 ASS'Y	1	PC.
87			SE00000193	SCREW 3X10	2	PC.
88			SE00000199	SILICON RUBBER WASHER	1	PC.
89			SE00000325	SCREW PTB 3X8(NI)	1	PC.
90			SE00000199	SILICON RUBBER WASHER	1	PC.
91			SE00000325	SCREW PTB 3X8(NI)	1	PC.
92			SE00000422	SPEAKER HOLDER	1	PC.
93			SE00000430	SWITCH KNOB	1	PC.
94			SE00000431	BATTERY SWITCH ASS'Y	1	PC.
95			SE00000325	SCREW PTB 3X8(NI)	2	PC.
96			SE00000433	PCB B DC JACK ASS'Y	1	PC.
97			SE09090011	SCREW 1.7	2	PC.
98			SE00000435	DC JACK HOLDER	1	PC.
99			SE00000436	TERMIANL G (B)	1	PC.
100			SE00000325	SCREW PTB 3X8(NI)	3	PC.
101			SE00000195	W/TIES 100MM	3	PC.
102			SE024PC040	PACKING	1	PC.

ACCESSORIES

- See Catalogue or visit www.makita.ca for more accessories information -

A01			SE00000104	AC ADAPTER	1	PC.
A02			-----	7.2V - 18V LI-ION BATTERIES		
A03			-----	CHARGERS		