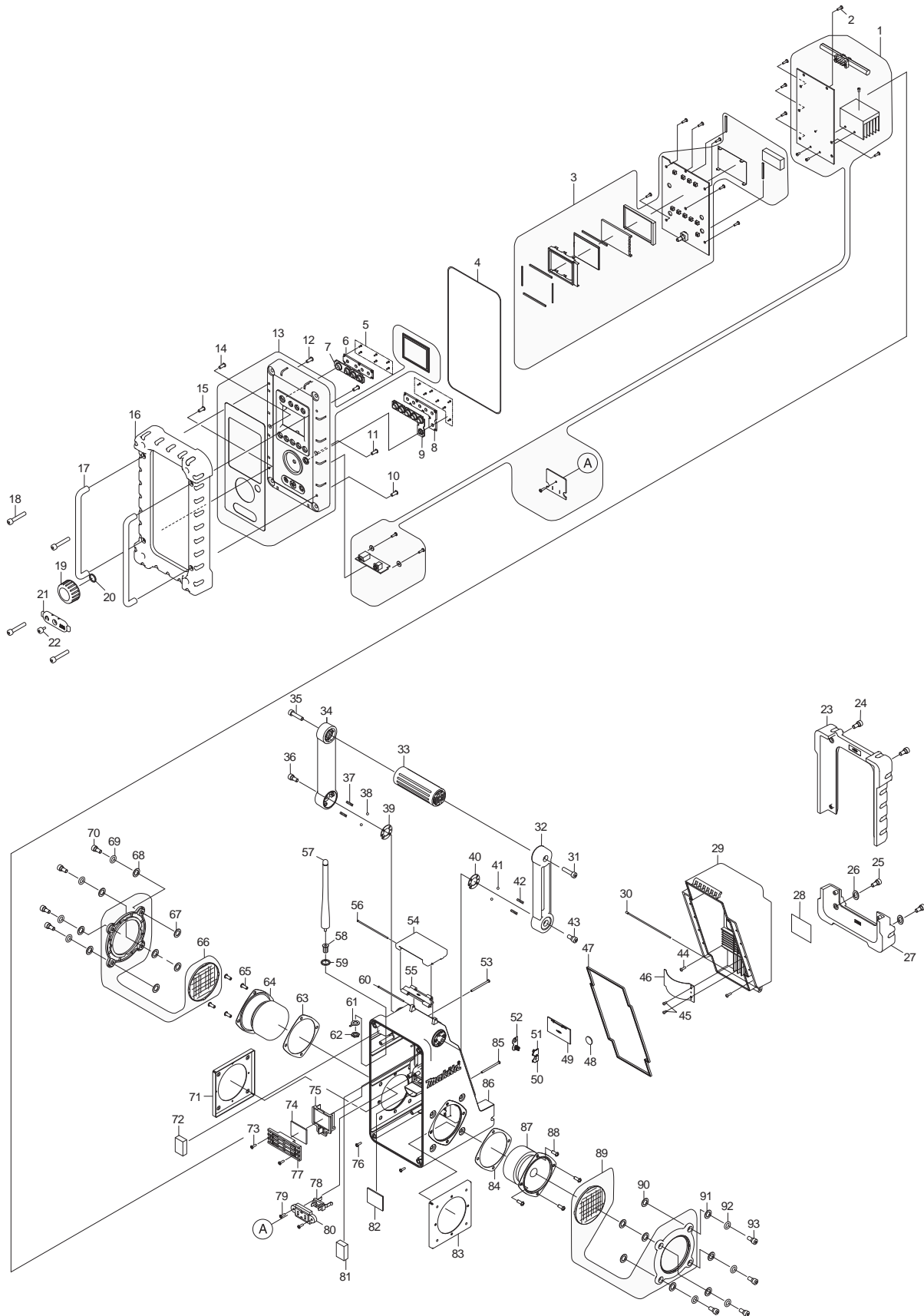




09-2010  
BMR100  
AM/FM JOBSITE RADIO AC/DC



Item No.	Type	Sub	Part No.	Description	Q'ty	Unit
1	1		SE00000010	CIRCUIT BOARD A #MODULE C (TYPE1 - Remains available)	1	PC.
	2		SE00000036	CIRCUIT BOARD A #MODULE C + FCC (TYPE2)	1	PC.
		INC.	SE00000051	CIRCUIT BOARD A	1	PC.
		INC.	SE00000048	CIRCUIT BOARD A JACK	1	PC.
		INC.	SE00000049	CIRCUIT BOARD A SPEAKER WIRE	1	PC.
2			SE09163102	SCREW M3X10	12	PC.
3	1		SE00000011	CIRCUIT BOARD C ASSEMBLY (TYPE1 - Remains available)	1	PC.
	2		SE00000037	CIRCUIT BOARD C MODULE D + FCC (TYPE2)	1	PC.
4			SE024PC040	PACKING	1	PC.
5			SE09090011	SCREW 1.7	13	PC.
6			SE020PC020	POWER BUTTON HOLDER	1	PC.
7			SE0310PC5Z	POWER BUTTON	1	PC.
8			SE020PC030	PRESET BUTTON HOLDER	1	PC.
9			SE0312PC5Z	PRESET BUTTON	1	PC.
10			SE09064161	SCREW M4X16	1	PC.
11			SE09163082	SCREW M3X8	1	PC.
12			SE09064161	SCREW M4X16	2	PC.
13			SE00000005	FRONT CABINET ASSY	1	PC.
14			SE09163082	SCREW M3X8	1	PC.
15			SE09064161	SCREW M4X16	1	PC.
16			SE0331PC5Z	FRONT BUMPER	1	PC.
17			SE0338PC5Z	FRONT BAR	2	PC.
18			SE09176426	SCREW M6X42	4	PC.
19			SE0313PC5Z	ROTARY KNOB	1	PC.
20			SE21B1110A	ROTARY KNOB RING	1	PC.
21	1		SE0335PC5Z	JACK COVER (TYPE1 - remains available)	1	PC.
	2		SE00000042	JACK COVER F/MPS PLUG (TYPE2)	1	PC.
22			SE09173106	HEX SCREW M3X10	1	PC.
23			SE0334PC5Z	BATTERY COVER BUMPER	1	PC.
24			SE09176106	HEX SCREW M6X10	2	PC.
25			SE09176106	HEX SCREW M6X10	2	PC.
26			SE024J9070	PACKING	2	PC.
27			SE0333PC5Z	REAR BUMPER	1	PC.
28			SE0340PC5Z	ID LABEL	1	PC.
29			SE0304PC5Z	BATTERY COVER	1	PC.
30			SE021PC030	BATTERY COVER LOCKER	1	PC.
31			SE9076146A	HEX SCREW M6X14	1	PC.
32			SE309PC5ZR	HANDLE HOLDER R	1	PC.
33			SE0309J96A	HANDLE	1	PC.
34			SE309PC5ZL	HANDLE HOLDER L	1	PC.
35			SE9076146A	HEX SCREW M6X14	1	PC.
36			SE09176166	HEX SCREW M6X16	1	PC.
37			SE021J9090	SPRING	2	PC.
38			SE09994007	STEEL BALL	2	PC.
39			SE021J9070	HANDLE SUS-PLATE	1	PC.
40			SE021J9070	HANDLE SUS-PLATE	1	PC.
41			SE09994007	STEEL BALL	2	PC.
42			SE021J9090	SPRING	2	PC.
43			SE09176166	HEX SCREW M6X16	1	PC.
44			SE09163102	SCREW M3X10	2	PC.
45			SE09163062	SCRE M3X6	2	PC.
46			SE021PC000	BATTERY CUSHION	1	PC.
47			SE024PC010	PACKING	1	PC.
48			SE023PC030	SPACER	1	PC.
49			SE0307PC5Z	BACK UP BATTERY COVER	1	PC.
50			SE021E9010	BATTERY CONTACT (+)	1	PC.
51			SE021E9020	BATTERY CONTACT (-)	1	PC.
52			SE021E9030	BATTERY CONTACT ASSY +,-	1	PC.

Item No.	Type	Sub	Part No.	Description	Q'ty	Unit
53			SE09163452	SCREW M3X45	2	PC.
54			SE0308PC5Z	BATTERY COVER LOCKER	1	PC.
55		1	SE0314PC5Z	* LOCKER HINGER (TYPE 1-2)	1	PC.
		3	SE00000067	* LOCKER HINGER	1	PC.
56			SE021PC040	LOCKER FIXER PIN 79.5	1	PC.
57		1	SE0360PC5J	ROD ANTENNA (TYPE1)	1	PC.
		2	SE00000033	ROD ANTENNA (TYPE2)	1	PC.
58			SE021J9032	ROD ANTENNA HOLDER	1	PC.
59			SE024J9050	PACKING	1	PC.
60			SE021PC050	LOCKER FIXER PIN 63.8	1	PC.
61			SE021PC100	ROD ANTENNA TERMINAL	1	PC.
62			SE021P0020	NUT	1	PC.
63			SE024J9030	PACKING	1	PC.
64			SE01620771	SPEAKER	1	PC.
65			SE09090023	SCREW M4X12	4	PC.
66			SE00000006	SPEAKER NET ASSEMBLY	1	PC.
67			SE024J9090	PACKING	4	PC.
68			SE024J9070	PACKING	4	PC.
69			SE024J9040	PACKING	4	PC.
70			SE9076146A	HEX SCREW M6X14	4	PC.
71			SE021J9010	SPEAKER HOLDER	1	PC.
72			SE023PC020	EVA 25X18X5.5	1	PC.
73			SE09163102	SCREW M3X10	2	PC.
74			SE023PC000	SPACER	1	PC.
75			GM00000530	BATTERY HOLDER	1	PC.
76			SE09153102	SCREW M3X10	2	PC.
77			SE020PC050	SLIDE BATTERY HOLDER	1	PC.
78			643926-9	BATTERY HOLDER	1	PC.
79			SE09163102	SCREW M3X10	2	PC.
80			SE020PC040	CLUSTER BATTERY HOLDER	1	PC.
81			SE023PC020	EVA 25X18X5.5	1	PC.
82			SE02311000	SPACER (A)	1	PC.
83			SE021J9010	SPEAKER HOLDER	1	PC.
84			SE024J9030	PACKING	1	PC.
85			SE09163452	SCREW M3X45	2	PC.
86		1	SE0303PC5Z	* BACK COVER (TYPE1 - Remains available)	1	PC.
		2	SE00000041	* BACK COVER W/MPC3 PLUG IN HOLE (TYPE2)	1	PC.
		3	SE00000068	* BACK COVER	1	PC.
87			SE01620771	SPEAKER	1	PC.
88			SE09090023	SCREW M4X12	4	PC.
89			SE00000006	SPEAKER NET ASSEMBLY	1	PC.
90			SE024J9090	PACKING	4	PC.
91			SE024J9070	PACKING	4	PC.
92			SE024J9040	PACKING	4	PC.
93			SE9076146A	HEX SCREW M6X14	4	PC.
<b>ACCESSORIES</b>				- See catalogue or visit <a href="http://www.makita.ca">www.makita.ca</a> for more accessories information -		
A01		1	SE00000002	AC ADAPTER 383PC 20B - N/L/A	1	PC.
		2	SE00000015	AC ADAPTER RH41-1200700DU(G) (SE until NOV2010)	1	PC.
		3	SE00000077	AC ADAPTER AWG24 W/COLD RESISTANT (SE from DEC2010)	1	PC.

**SERVICE CHANGES**

**1. Changes on Locke hinger and Back cover**

<b>Item No.</b>	<b>Description</b>	<b>Type 1</b>	<b>Type 2</b>	<b>Type 3</b>
55	Locker Hinger	SE0314PC5Z		SE00000067
86	Back Cover	SE0303PC5Z	SE00000041	SE00000068

Above parts are completely interchangeable as a set.